

# VALLKREE LCD-P Display Instructions

## Button definition

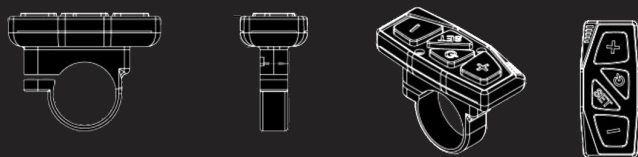
LCD-P has four buttons, including **ON/OFF**, **SET**, **UP** and **DOWN**.

**ON/OFF** = 

**SET** = 

**UP** = 

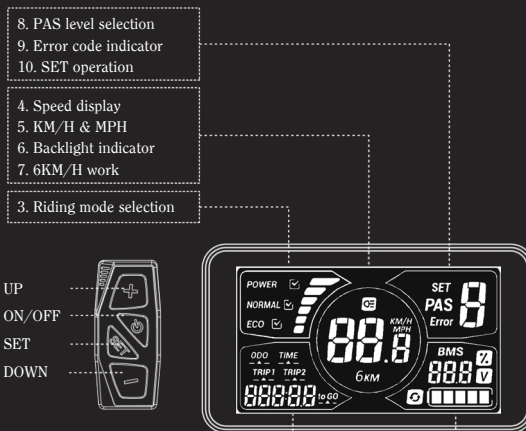
**DOWN** = 



## Function Summary

LCD-P provides a wide range of functions and indicators to fit the users' needs. The indicated contents are as below.

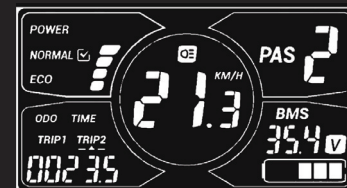
1. ON/OFF
2. Current display
3. KM/H & MPH
4. Backlight Indicator
5. 6KM/H Work
6. PAS Level Selection
7. Error Code Indicator
8. SET Operation
9. Distance Indication
  - 9.1 Total distance (ODO)
  - 9.2 Trip 1
  - 9.3 Trip 2
10. Trip time indicator
11. Battery indicator
  - 11.1 Battery residual capacity indicator
  - 11.2 Battery voltage
12. Cable definition
13. Auto sleep after 5 minutes



11. Distance indicator
  - 11.1 Total distance (ODO)
  - 11.2 Trip 1
  - 11.3 Trip 2
  - 11.4 Remaining distance (to go)
12. Trip time indicator
13. Batter indicator
  - 13.1 Battery residual capacity indicator
  - 13.2 Battery voltage
  - 13.3 Battery capacity percentage
  - 13.4 Battery charging and discharging times
14. Trip time indicator
15. Auto sleep after 5 minutes



Full View Area



Normal View Area

## **Normal Operation**

### **1. ON/OFF**

Hold ON/OFF and start the display. The display will provide power for the controller. Hold ON/OFF again to open the backlight. With display on, press ON/OFF for 3 seconds to turn off the power. With the display off, there is no battery power consumption. The leakage current is no more than 2  $\mu$ A.

The panel will go to sleep when the speed is 0 km/h for 5 minutes.

### **2. Current Display**

That represents the discharging current of the controller currently, each segment is 2A, six segments is  $\geq 12$ A.



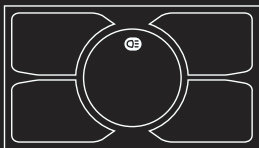
### **3. KM/H & MPH**

Select KM/H or MPH for the speed and mileage, display will be the currently selected units display.

### **4. Backlight Indicator**

With the power on, click the ON/OFF and turn on the backlight. Click it again and turn off the backlight.

If the e-bike has headlight, the controller will turn on/off the headlight at the same time of the backlight on/off (without this function by default).



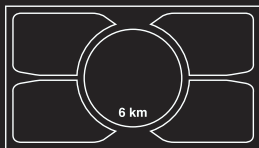
### **5. 6KM/H Work**

Hold the DOWN for 2 seconds to get in 6km PAS work, and with your hand off, the 6km PAS work is released. The display is as below.



### **6. PAS Level Selection**

Click UP or DOWN to change the stages and output power ratio, the default mode are from mode 1 to mode 6.



### **7. Error Code Indicator**

If there is something wrong with the electronic control system, the display will flash at 1 HZ and show the error code automatically.

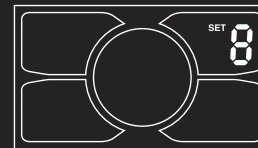
Different error code is corresponding with different fault information, please see the last page Error code table for details.



Display return to normal only after problem being fixed and e-bike will not run before fixing the problem.

### **8. SET Operation**

Hold the SET for 2 seconds and enter into the setting interface, then Number 8 is lighting, the display will flash at 1 HZ. Click the SET to cycle from 0 to 2 setting interface, press UP or DOWN to select the wanted parameter, and hold the SET for 1 second to exit.



### 8.1 SET 0:Reset trip 1 distance

Click the DOWN to reset the trip 1, then the TRIP1 icon will flash at 1 HZ, meanwhile the trip 1 will be cleared.

### 8.1 SET 1:Wheel diameter setting

Select the accurate wheel diameter value to ensure the accuracy of display about speed and mileage.

### 8.2 SET 2:KM/H & MPH

Select KM/H or MPH for the speed and mileage, display will be the currently selected units display.  
Press UP or DOWN to select parameter, hold the SET for 1 second to save and exit.

### 9. Distance Indicator

With the display on, press SET to switch the display information, in turn shows: ODO, trip 1 and trip 2.

#### 9.1 ODO

The ODO records the driving mileage from using, the accumulated value cannot be cleared.

#### 9.2 Trip 1

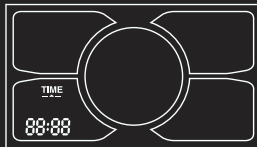
Trip 1 can be reset by hand in the SET 1 interface. (when the riding mileage  $\geq 500$ km, it will be reset automatically. The value will be accumulated without resetting.)

#### 9.3 Trip 2

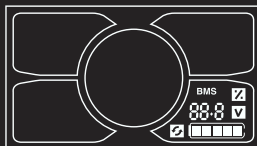
Trip 2 displays the last driving distance for 30 s after turning on the display, then reset it automatically and start to record the current distance.

### 10. Trip Time Indicator

The riding time parameter is automatically reset when the speed $>5$ KM/H. after shut down



### 11. Battery Indicator



#### 11.1 Battery residual capacity indicator

The battery frame has five segments. Each segment represents 20% battery capacity. When the capacity is full, the five segments are all light. In low battery, the battery frame will flash, it indicates that the battery is severely low and needs to be recharged immediately.



#### 11.2 Battery voltage

It displays the current voltage of the battery. The panel displays the voltage for the default.

### 12. Cable Definition

1 RED: Battery +  
2 BLACK:Battery -  
3 GREEN: UART-SEND(TXD)  
4 BLUE: UART- RECEIVE(RXD) 5  
YELLOW:Lock

### 13. Auto Sleep After 5 Minutes

When the riding speed is 0 km/h for 5 minutes, the system will go to sleep automatically.

### Error Code Table

The error code is corresponding with the fault definition.

ERROR CODE	DEFINITION
2	Current error or MOS damaged
3	Motor stalling
4	Under voltage
5	Brake error (start detection)
6	Hall damaged
7	Throttle error
8	Error 3, 5, 8
9	Over high voltage ( $>45$ V)
10	Communication controller receiving error
15	Communication display receiving error